

# Kiosk Substation

END ON END PACKAGED SUBSTATION TRANSFORMERS

Product Data Sheet

Revision: 1

**ETEL**

ISO 9001 Registered

The ETEL Kiosk Substation is manufactured to minimise the total cost of ownership for a transformer with protective switchgear.

Housed within an enclosure (bunded optional), the modular approach taken by ETEL enables customers to select the transformer capacity (up to 3.5MVA), the High Voltage Switchgear (Oil filled, SF6 or Air), and the Low Voltage Switchgear to meet their project requirements. All electrical connections within the Kiosks are assembled and tested prior to shipment, requiring only the HV Switchgear and LV Switchboard connections be made on site.

The ETEL Kiosk Substation offers a swift, mobile method of supplying a low cost substation with maximum flexibility and minimum on-going maintenance.

\* Also available in side by side arrangement, see side by side package substation brochure.



## Features

- 50kVA up to 3500kVA available
- Compact designs with the highest quality materials and performance
- Customer specified High Voltage Switch and brand (Oil filled, SF6, Air insulated)
- Customer specified Low Voltage Switchgear (Circuit Breaker, DIN)
- Reduced installation and maintenance costs
- Optional built-in oil containment
- Standard transformer oil or biodegradable fluid options available
- Full automation options available
- Additional transformer and switchgear protection available

## Technical Specifications

<b>Core Type</b>	Distributed gap wound core, shell type transformers
<b>Electrical Steel Type</b>	Cold rolled, grain oriented, silicon steel sheets
<b>Tank Sealing</b>	Hermetically sealed
<b>Oil Type</b>	Oil filled to AS1767 and BS148
<b>kVA sizes available</b>	100kVA up to 3500kVA
<b>HV Volts</b>	6600, 11000, 22000, 33000 (others available)
<b>LV Volts</b>	433 - 250 As standard (others available)
<b>Connection</b>	Dyn11, YNd11 As standard (others available)
<b>HV Tappings</b>	+5% to -7.5% up to 300kVA +2.5% to -10% 500kVA & above Tapping in steps of 2.5% As standard (others available)
<b>Oil / Winding Rises</b>	60 / 65°C As standard (others available)
<b>BIL / Power Frequency Levels</b>	95kVpeak / 28kVrms 150kVpeak / 50kVrms 200kVpeak / 70kVrms
<b>Maximum Operating Pressure</b>	35kPA

# Kiosk Substation

END ON END PACKAGED SUBSTATION TRANSFORMERS

Product Data Sheet

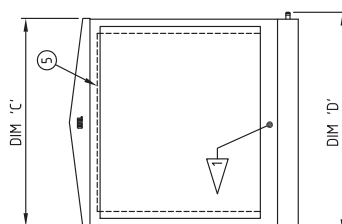
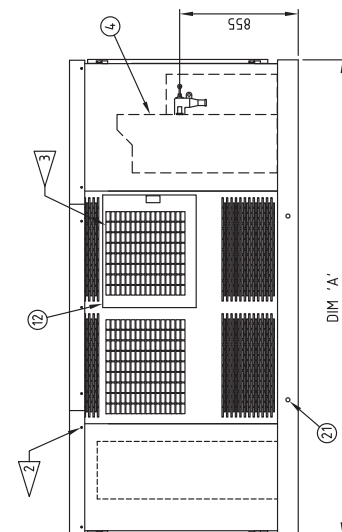
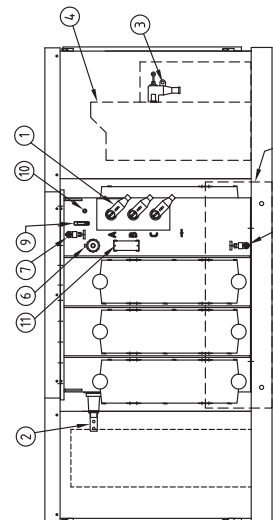
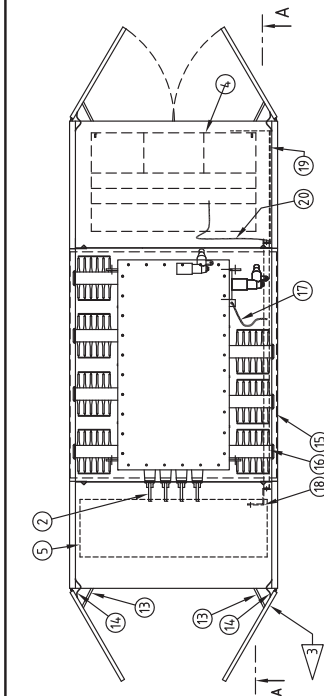
Revision: 1



ISO 9001 Registered



ITEM	DESCRIPTION
1	11/22kV DEADBREAK INSERTS + ELBOWS & XLPE CABLES CONNECTING TRANSFORMER TO RINGMAIN UNIT
2	LV BUSHINGS (300kVA - 500A) (500kVA - 700A) (750kVA - 1050A) (1000kVA - 1400A) (1500kVA - 2000A)
3	11/22kV DEADBREAK INSERTS + ELBOWS & XLPE CABLES CONNECTING TRANSFORMER TO RINGMAIN UNIT
4	RINGMAIN UNIT - 12/24kV
5	LV SWITCHGEAR - REFER TO SEPARATE DRAWING
6	TAP SWITCH HANDLE & LOCKING BRACKET
7	25NB OIL FILLER VALVE & PLUG
8	25NB OIL DRAIN VALVE & PLUG
9	OIL LEVEL GAUGE
10	THERMOMETER POCKET
11	RATING PLATE
12	HINGED ACCESS HATCH TO TRANSFORMER FITTINGS
13	DOOR STAYS
14	DOOR EARTH CABLES 35mm <sup>2</sup>
15	OIL CONTAINMENT BUNDING - (OPTIONAL)
16	MAIN KIOSK EARTH BAR 40 x 6mm TINNED Cu
17	TRANSFORMER EARTH CABLE 240mm <sup>2</sup>
18	LV EARTH EXTENSION BAR 40 x 6mm TINNED Cu
19	HV CUBICLE EARTH BAR 40 x 6mm TINNED Cu
20	EARTH CABLE 70mm <sup>2</sup> - RINGMAIN
21	LIFTING PIN - FOR USE WITH LIFTING SPREADER DEVICE



kVA	OIL Litres	UNTANKING MASS kg	TRANSFORMER MASS kg	SUBSTATION MASS kg
300	370	900	1600	2585
500	576	1240	2140	3780
750	800	1750	3130	4790
1000	1080	1960	3530	5190
1500	1250	2685	4780	6900

kVA	LENGTH DIM 'A' mm	HEIGHT DIM 'B' mm	WIDTH - UNIT DIM 'C' mm	WIDTH - BASE DIM 'D' mm
300	2952	1453	1332	1420
500	3430	1650	1500	1588
750	3430	1650	1500	1588
1000	3430	1650	1500	1588
1500	3430	1650	1500	1588

- NOTES:
- 1 ALL REMOVABLE WEATHER ANGLES SECURED WITH M8 STAINLESS STEEL HEX HEAD SET SCREWS
  - 2 ENCLOSURE COVER SECURED WITH M8 SECURITY BUTTON HEAD SET SCREWS
  - 3 LV & HV DOORS & ACCESS HATCH FITTED WITH LOCKWOOD NIGHT LATCHES & FLUSH DOOR PULLS, DOOR 3 POINT LATCHING

FOR TENDER PURPOSES ONLY  
NOT FOR MANUFACTURE

REV	DESCRIPTION	DRAWN	DATE	APPD.	DRAWN	DATE	SCALE	TOLERANCE
.					M. STOREY	21 MAR 2012		
.					CHECKED	P LEECE		
.					DATE	28 MAR 2012		
.					SCALE	NTS		
.					TOLERANCE			

GENERAL ARRANGEMENT  
300kVA 500kVA 750kVA 1000kVA & 1500kVA  
22kV KIOSK DISTRIBUTION SUBSTATIONS



Distribution Transformers  
DRAWING No. 039.904.0714  
REV A