

# Industrial

## CABLE BOX DISTRIBUTION TRANSFORMER

Product Data Sheet

Revision: 1

# ETEL

ISO 9001 Registered

ETEL's Industrial Distribution Transformers are designed for simplicity of installation and ease of maintenance. All transformers are designed with Hermetically sealed tanks for long life and minimum oil maintenance.

The range extends from 100kVA (or smaller) through to 3500kVA (3 phase) arrangements for indoor and outdoor applications, in Australia, New Zealand and the Pacific Islands.

ETEL's full range includes a model to meet your Distribution Transformer needs. Discuss your particular requirements with our Engineering team.



### Features

- Simple tank and terminal configurations for optimum cost efficiency
- Accessories for Transformer protection and Monitoring
- Cable Boxes, Kiosk or open bushing arrangements
- Hermetically sealed for long life
- 100 to 3500kVA
- Zinc spray Paint system available for highly corrosive environments
- Standard Transformer oil or biodegradable fluid options available.

### Technical Specifications

<b>Core Type</b>	Distributed gap wound core, shell type transformers
<b>Electrical Steel Type</b>	Cold rolled, grain oriented, silicon steel sheets
<b>Tank Sealing</b>	Hermetically sealed
<b>Oil Type</b>	Oil filled to AS1767 and BS148
<b>HV Volts</b>	6600, 11000, 22000, 33000 (others available)
<b>LV Volts</b>	433 - 250V Dyn11 As standard (others available)
<b>HV Tappings</b>	+5% to -7.5% up to 300kVA + 2.5 to -10% in 2.5% steps 500kVA and above (others available)
<b>Oil / Winding Rises</b>	60 / 65°C As standard (others available)
<b>BIL / Power Frequency Levels</b>	95kVpeak / 28kVrms 150kVpeak / 50kVrms 200kVpeak / 70kVrms
<b>Maximum Operating Pressure</b>	35kPA

# Industrial

## CABLE BOX DISTRIBUTION TRANSFORMER

Product Data Sheet

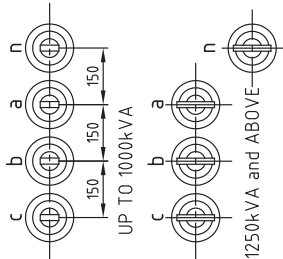
Revision: 1



ISO 9001 Registered



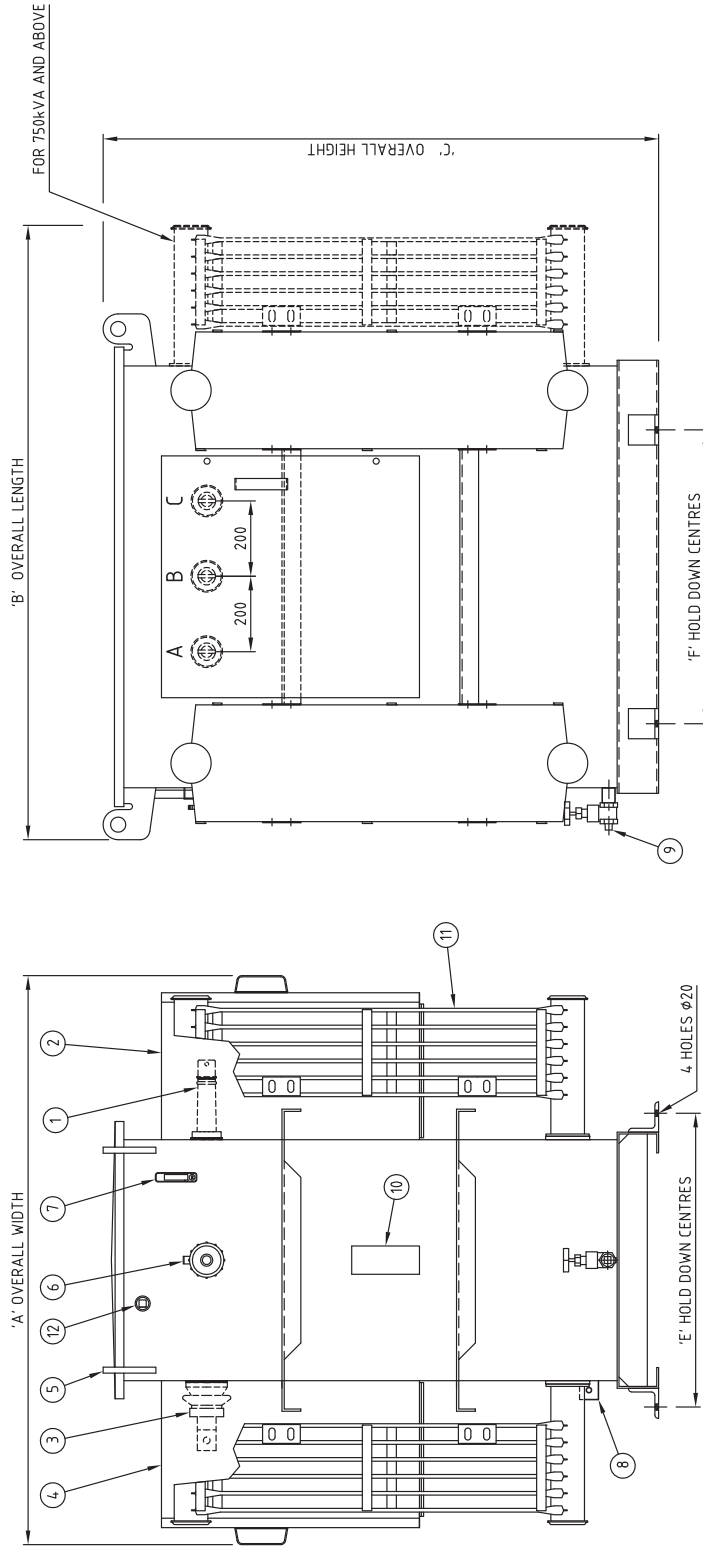
### LV BUSHING ARRANGEMENT



kVA	DIM 'A' (mm)	DIM 'B' (mm)	DIM 'C' (mm)	DIM 'E' (mm)	DIM 'F' (mm)	OIL (Litre)	UNTANKING MASS (kg)	TOTAL MASS (kg)
100	1320	1260	1100	630	630	300	370	900
200	1380	1260	1150	700	700	360	550	1200
300	1500	1400	1200	740	740	400	800	1500
500	1520	1500	1450	780	780	610	1100	2240
750	1520	1850	1650	800	800	810	1400	2800
1000	1520	1850	1650	800	800	760	1680	3020
1250	1640	1950	1700	900	900	1015	2050	3805
1500	1680	2100	1750	940	940	1215	2590	4580

ALL WEIGHTS AND DIMENSIONS ARE APPROXIMATE  
AND FOR TENDER PURPOSES ONLY

ITEM	DESCRIPTION
1	HV BUSHING, NOT CABLEBOX
2	HV CABLEBOX 11kV, PARTIALLY INSULATED TO (BS 6435)
3	LV BUSHING, ESAA No.72 : 100-300kVA, ESAA No.73 : 500-1500kVA
4	LV CABLEBOX TO SUIT No.72 & No.73 BUSHINGS
5	LIFTING LUG
6	TAPSWITCH HANDLE & LOCKING BRACKET
7	OIL LEVEL GAUGE
8	EARTH TERMINAL
9	25NB DRAIN VALVE & PLUG (500kVA & ABOVE)
10	RATING PLATE
11	RADIATORS (AS REQUIRED)
12	25NB OIL FILLER & FILTER SOCKET (500kVA & ABOVE)



REV	DESCRIPTION	DRAWN	DATE	APPD.	DRAWN	M. STOREY	DATE	CHECKED	P. LEECE	DATE	SCALE	NTS	TOLERANCE
.	.	.	.	.	.	.	28 MAR 2012	.	.	28 MAR 2012	.	NTS	.

 <b>ETEL</b> Distribution Transformers	
GENERAL ARRANGEMENT INDUSTRIAL TRANSFORMERS CABLE BOX / CABLE BOX 100 TO 1500 kVA 11000 / 433-240V	DRAWING No. <b>039.904.0716</b>
REV	A