

Pole Bolt - SWER

SWER POLE BOLTED TRANSFORMERS

Product Data Sheet

Revision: 1

ETEL

ISO 9001 Registered

ETEL brings over 25 years of experience in Distribution Transformers together with state of the art manufacturing techniques to produce high quality, low loss three phase Pole Bolted Transformers.

The SWER Pole Top Selection includes platform and pole bolted arrangements from 16kVA through to 50kVA (100 also available in rectangular housing) as utilised in Australia, New Zealand and the Pacific Islands.

ETEL offers as standard the best Long-term finish, utilising fully Hot Dipped Galvanised Tanks and Lids. Painted and other solutions are available.



Features

- Integrated pole bolting arrangements
- Lid mounted HV bushings
- Long life hot dipped galvanized finish
- 16kVA to 100kVA
- Lifting lugs
- Surge arrester brackets
- Optional fitted HV and LV surge arrestors
- Optional birdcap protection
- Optional pole bolt to crossarm adaptor bracket

Technical Specifications

Core Type	Distributed gap wound core, shell type transformers
Electrical Steel Type	Cold rolled, grain oriented, silicon steel sheets
Tank Sealing	Hermetically sealed
Oil Type	Oil filled to AS1767 and BS148
HV Volts	6350, 12700, 19100 As standard (others available)
LV Volts	500 - 250V (series - parallel) As standard (others available)
HV Tappings	+5% to -7.5% in 2.5% steps As standard (others available)
Oil / Winding Rises	60 / 65°C As standard (others available)
BIL / Power Frequency Levels	95kVpeak / 28kVrms 150kVpeak / 50kVrms 200kVpeak / 70kVrms
Maximum Operating Pressure	35kPA

Pole Bolt - SWER

SWER POLE BOLTED TRANSFORMERS

Product Data Sheet

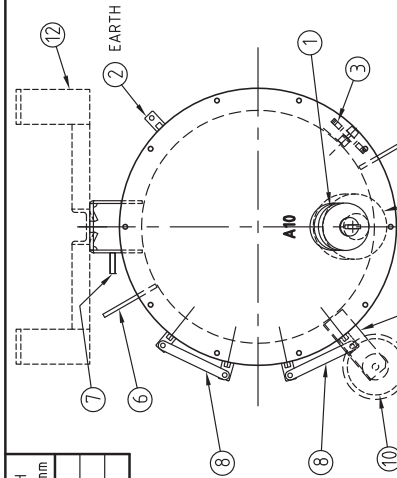
Revision: 1



ISO 9001 Registered



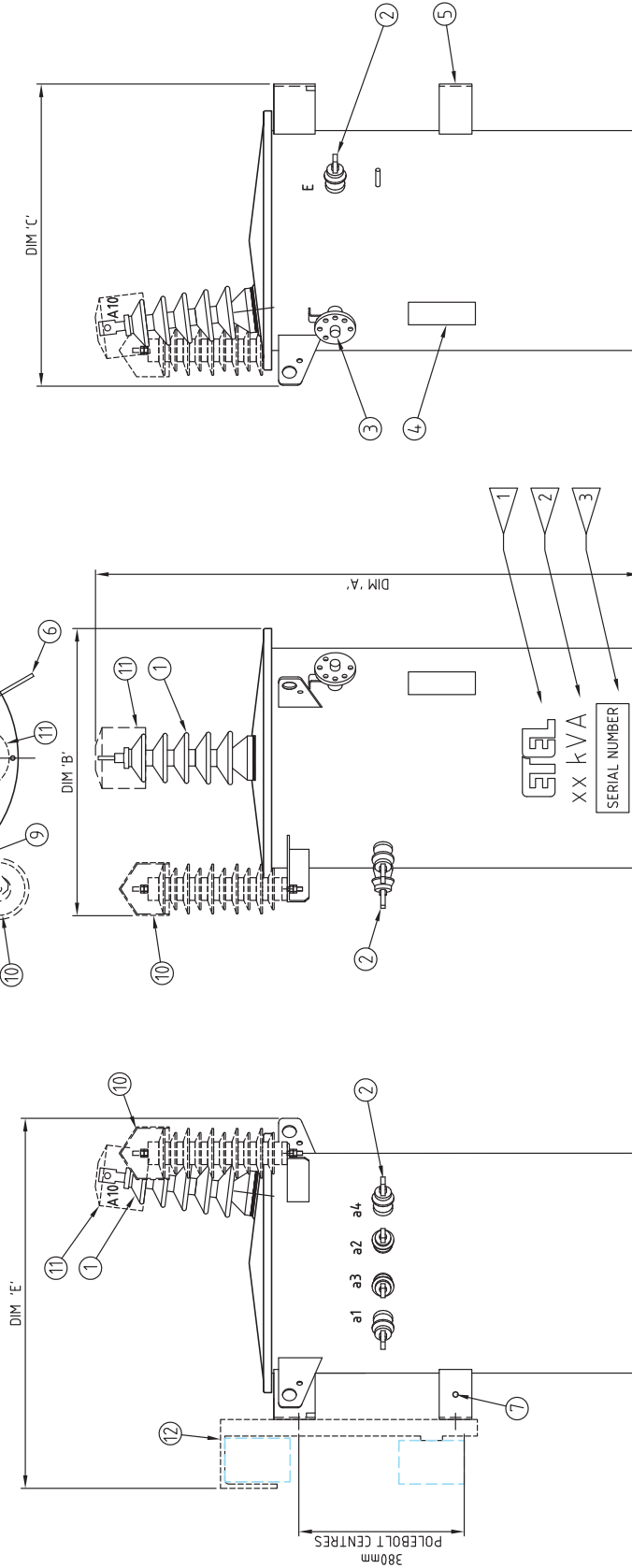
ITEM	DESCRIPTION
1	HV BUSHING 22kV ESAA No77
2	LV & EARTH BUSHING 0.66kV ESAA No71
3	TAPSWITCH HANDLE & LOCKING BRACKET
4	RATING PLATE
5	POLE MOUNTING BRACKET (25kVA VERSION SHOWN)
6	LIFTING LUG
7	EARTH = M12 STAINLESS STEEL SET SCREW
8	SERIES / PARALLEL LINK
9	SURGE ARRESTOR BRACKET
10	SURGE ARRESTOR - (OPTIONAL)
11	BIRD CAP FOR HV BUSHINGS - (OPTIONAL)
12	BRACKET ADAPTER POLEBOLT TO CROSSARM - (OPTIONAL)



kVA	OIL Litres	UNTANKING MASS kg	TOTAL kg	HEIGHT DIM 'A' mm	WIDTH DIM 'B' mm	DEPTH DIM 'C' mm	WIDTH DIM 'E' mm
16	46	91	170	965	520	580	730
25	52	140	220	1120	520	630	790
50	100	225	370	1250	660	700	860

FOR TENDER PURPOSES ONLY
NOT FOR MANUFACTURE

- NOTES:
- 1 ETEL COMPANY LABEL (75mm LETTERING)
 - 2 kVA RATING (50mm LETTERING)
 - 3 ETEL SERIAL NUMBER (50mm LETTERING)
 - 4 LABELS - SELF ADHESIVE, BLACK VINYL, WEATHERPROOF



REV	DESCRIPTION	DRAWN	DATE	APPD.	DATE	DRAWN	BILL SHERA
B	DIM 'E' ADDED	A.R.	01 OCT 10	V.S.			18 AUG 2010
C	16kVA DETAILS ADDED TO TABLE. ITEM 2, LV BUSHING					CHECKED	VIRGILIO
	660V was 415V, 25kVA POLEBOLT BKT NOW SHOWN	M.S.	21 MAR 12	P.L.		DATE	18 AUG 2010
						SCALE	NTS
						TOLERANCE	

GENERAL ARRANGEMENT
 16kVA, 25kVA & 50kVA
 SWER 12.7kV / 500-250V
 TRANSFORMER

Distribution Transformers	
DRAWING No.	039.904.0547
REV	C