

# Pole Bolt - Three Phase

THREE PHASE LARGE CAPACITY POLE BOLTED TRANSFORMERS

Product Data Sheet

Revision: 1

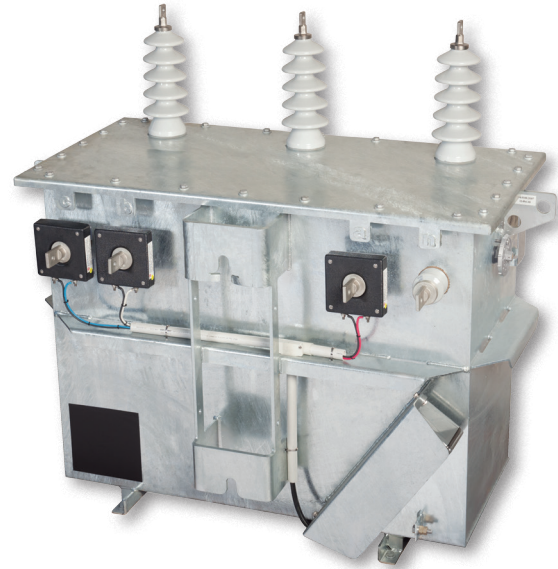
**ETEL**

ISO 9001 Registered

ETEL brings over 25 years of experience in Distribution Transformers together with state of the art manufacturing techniques to produce high quality, low loss three phase Pole Bolted Transformers.

The Large Capacity Pole Top selection includes platform and pole bolted arrangements from 100kVA through to 630kVA (10 - 75kVA capacity available in smaller housing) as utilised in Australia, New Zealand and the Pacific Islands.

ETEL offers as standard the best long-term finish, utilising fully Hot Dipped Galvanised Tanks and Lids. Painted and other solutions are available.



## Features

- Integrated pole bolting arrangements
- Lid mounted HV bushings
- Long life hot dipped galvanized finish
- 100 to 630kVA (other lower kVA ratings available)
- Lifting lugs
- Surge arrester brackets
- Optional fitted HV and LV surge arrestors
- Optional birdcap protection
- Optional pole bolt to crossarm adaptor bracket
- Optional MDI and CT arrangement

## Technical Specifications

<b>Core Type</b>	Distributed gap wound core, shell type transformers
<b>Electrical Steel Type</b>	Cold rolled, grain oriented, silicon steel sheets
<b>Tank Sealing</b>	Hermetically sealed
<b>Oil Type</b>	Oil filled to AS1767 and BS148
<b>HV Volts</b>	6600, 11000, 22000, 33000 (others available)
<b>LV Volts</b>	433 - 250V Dyn11 As standard (others available)
<b>HV Tappings</b>	+5% to -7.5% in 2.5% steps Standard (others available)
<b>Oil / Winding Rises</b>	60 / 65°C As standard (others available)
<b>BIL / Power Frequency Levels</b>	95kVpeak / 28kVrms 150kVpeak / 50kVrms 200kVpeak / 70kVrms
<b>Maximum Operating Pressure</b>	35kPA

# Pole Bolt - Three Phase

THREE PHASE LARGE CAPACITY POLE BOLTED TRANSFORMERS

Product Data Sheet

Revision: 1



ISO 9001 Registered

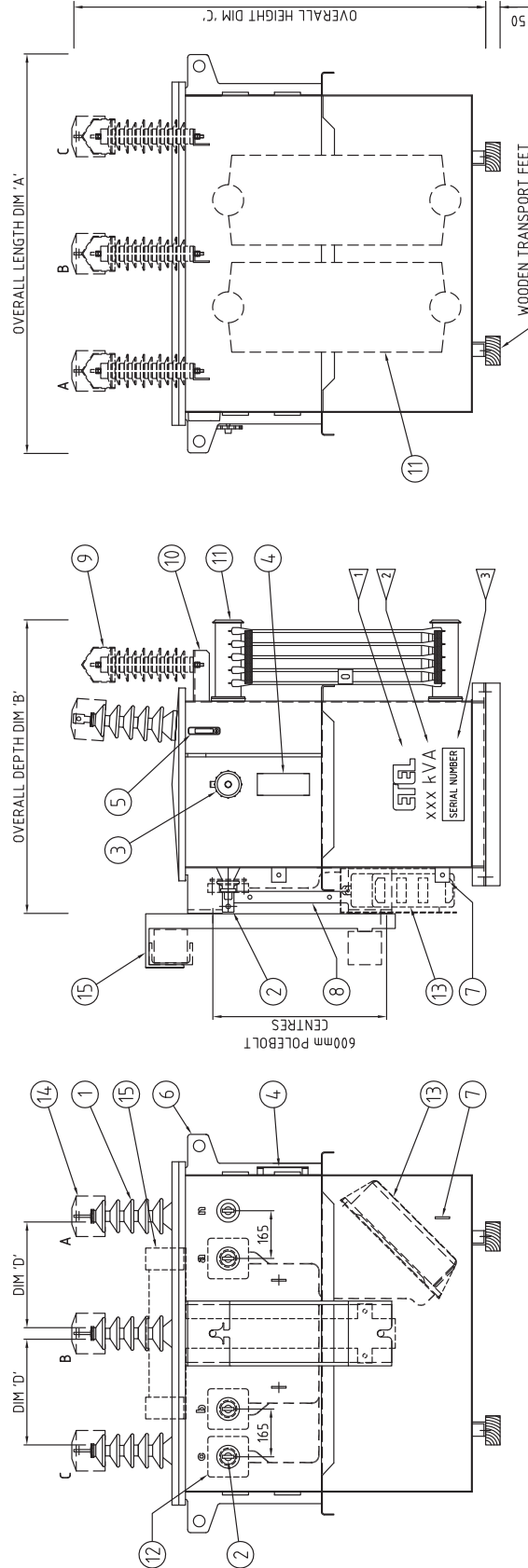


ITEM	DESCRIPTION
1	HV BUSHING 24kV ESAA No77 ONE PIECE 30A
2	LV BUSHING (AS LISTED)
3	TAPSWITCH HANDLE & LOCKING BRACKET
4	RATING PLATE
5	OIL GAUGE
6	LIFTING LUG
7	EARTH TAG WITH M12 x 50mm STAINLESS STEEL SET SCREW
8	POLE MOUNTING BRACKET
9	SURGE ARRESTOR 21kV, WITH WILDLIFE PROTECTION COVER (OPTIONAL)
10	SURGE ARRESTER BRACKET
11	COOLING RADIATORS (IF REQUIRED)
12	CURRENT TRANSFORMERS EXTERNALLY MOUNTED (OPTIONAL)
13	EXTERNALLY MOUNTED MDI's WITH TRANSPARENT COVER (OPTIONAL)
14	WILDLIFE PROTECTION COVER FOR HV BUSHINGS (OPTIONAL)
15	BRACKET ADAPTER POLEBOLT TO CROSSARM (OPTIONAL)

kVA	OIL Litres	UNTANKING MASS kg	TOTAL kg	LENGTH DIM 'A' mm	DEPTH DIM 'B' mm	HEIGHT DIM 'C' mm	SEPARATION DIM 'D' mm	L.V. BUSHINGS
100	290	440	900	1330	790	1280	353	3.3kV ESAA No72, 200A
200	365	667	1195	1380	1000	1365	365	3.3kV ESAA No72, 500A
315	360	815	1385	1380	1010	1422	365	3.3kV ESAA No72, 200A
500	460	1195	1930	1470	1200	1540	408	3.3kV ESAA No73, 800A

- NOTES:
- 1 ETEL COMPANY LABEL (75mm LETTERING)
  - 2 kVA RATING (50mm LETTERING)
  - 3 ETEL SERIAL NUMBER (50mm LETTERING)
  - 4 LABELS - SELF ADHESIVE, BLACK VINYL, WEATHERPROOF

FOR TENDER PURPOSES ONLY  
NOT FOR MANUFACTURE



REV	DESCRIPTION	DRAWN	DATE	APPD.	M. STOREY
.			20 MAR 2012		
.					
.			28 MAR 2012		
.					
.					

GENERAL ARRANGEMENT	
100kVA, 200kVA, 315kVA & 500kVA	
3 PHASE POLE BOLT ARRANGEMENT	
22000 / 433-250V	

DRAWING No.	039.904.0713
REV	A